

# LOOKBOOK



W·KLEINBERG

TRUNK SHOW | SEPTEMBER 23-26, 2021

*calf smooth, textured & embossed leathers*

W·KLEINBERG

# TRUNK SHOW

*make it custom*

SHOP WITH OUR REP, LAUREN!

Shop with our W. Kleinberg representative, Lauren on Thursday, September 23 from 12-7PM and Friday, September 24 fro 10AM-3PM.

Can't stop in while Lauren is here, don't worry we will have samples all weekend long for you to shop from.



Please allow 4-5 weeks for special orders.

All specials are made to order.

Covered buckles come only in the widths shown.

5/8", 1-1/8", 1-1/2", 2", 2- 3/8"

Some buckles can come in Nickel or Gold finishes.



127 S Fairfax Street  
Alexandria, VA 22314

## MONTE CARLO CALF

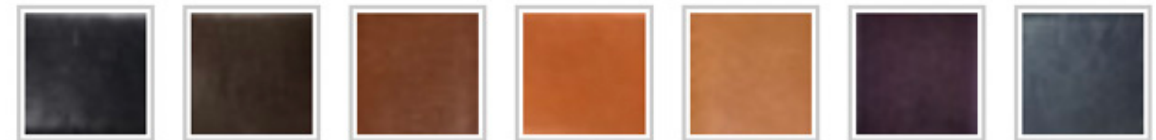
\$150



3/4" Glazed Calf with Nickel Keepers and Buckle

Style #: 34MC-4523N

Colors Available: Black, Chocolate, Cognac, Papaya, and Oil



## PATENT CALF

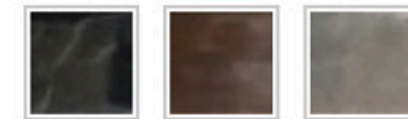
\$150



5/8" Patent Leather with Covered Buckle

Style #: 58PAT-4500CB

Colors Available: Black, Chocolate, Camel, Grey, Navy, and Red



## MONTE CARLO CALF

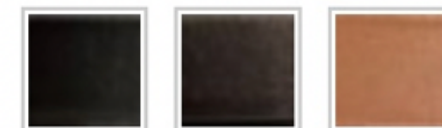
\$175



7/8" Semi Matte Calf with Gold Clip Buckle

Style #: 78VIP-0158G

Colors Available: Black, Chocolate, Cognac, Grey



ILN METALLIC CALF

\$160



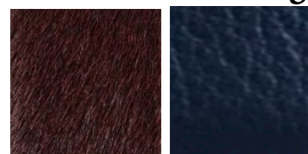
1 1/8" Metallic Calf with Covered Buckle  
 Style #: 118ILN-3849CB  
 Colors Available: Gold and Space Grey  
**In Store: Space Grey**  
 ILN Metallic Calf

LUSCIOUS CALF

\$205



1 1/4" Luscious Calf Reversible Belt with Nickel Buckle  
 Style #: 114LUS-1010N WK-185  
 Style #: 114HC/BUC-1010G WK-205  
 Colors Available: Black, Bone, Chocolate, Navy, Nutmeg, Red, Royal, Tangerine, Yellow,  
**Luscious Calf**  
**In store: Burgundy haircalf/ Navy pebble**  
**In Store: As shown Nutmeg / Black**



\$235



2" Luscious calf Belt with Pearlized buckle  
 2LUS/LUS-B20767  
 Colors Available: Black, Chocolate, Cognac, Grey, and Navy



SOUTH BEACH CALF

\$55-\$250



1 1/4" Reversible Calf belt with Gold Buckle  
 Style #: 114SB/SB-365G  
 Colors Available: Antique Tan, Black Chocolate, Navy, Orange, Red, Royal, White,  
 • Strap fits Hermes 114 buckles

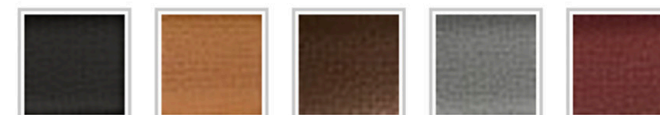


TOAST CALF

\$145-\$160



1 3/8" Pebbled Calf with Gold X-Buckle  
 Style #: 138TOA-1967G  
 Style #: 1TOA-1967G  
 Colors Available: Black, Gold, Grey, Lion, Red, and Tobacco  
**\*In store- Red**



SOUTH BEACH CALF

\$170



1 3/8" South Beach Calf with Gold Buckle, with or without Grommets  
 Style #: 138SB-5210GN  
 Colors Available:



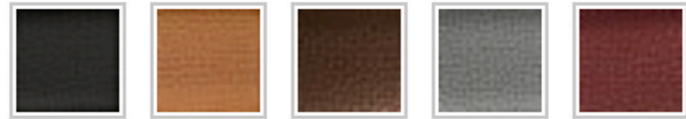
PEBBLED CALF

\$280



1 3/8" Pebbled Calf with Gold O-Rings  
Style #: 138TOA-ORINGSG

Colors Available: Black, Gold, Grey, Lion, Red, Tobacco



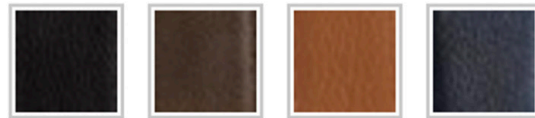
SEVILLE CALF

\$165



1 1/2" Seville Calf with Brushed Gold Buckle  
Style #: 112SE-4656GB

Colors Available: Black, Chocolate, Cognac, and Navy



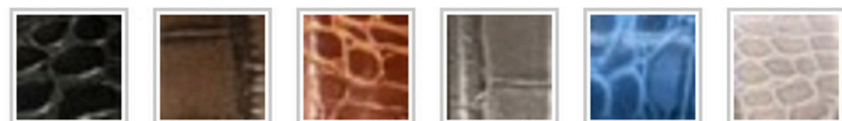
IEC EMBOSSED CALF

\$185



1 1/2" Italian Embossed Croc with Covered Buckle  
Style #: 112IEC-4735CB

Colors Available: Black, Bone, Chocolate, and Cognac



LUSCIOUS CALF

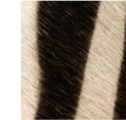
\$185



1 1/2" Luscious Calf with Gold Buckle  
Style #: 112LUS-894B

Colors Available: Black, Bone, Chocolate, Navy, Nutmeg,

**In Store: Zebra haircalf**



MONTE CARLO CALF

\$200

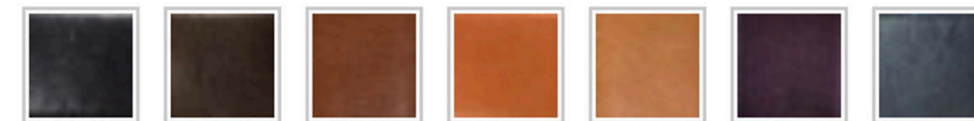


Style #: 112MC-16163BR

Colors Available: Black, Chocolate, Cognac, Grey, and Navy

**In Store**

**Monte Carlo Calf**



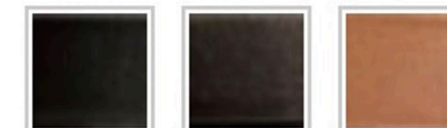
SEMI MATTE CALF

\$235



1 1/2" Semi Matte Calf with Gold Bit Buckle  
Style #: 112VIP-0337G

Colors Available: Black, Chocolate, Cognac, Grey, and Navy

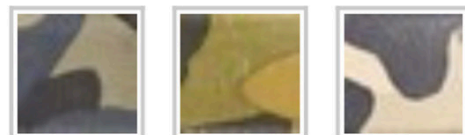


CAMO CALF

\$180



1 1/2" Camo Calf with Covered Buckle  
Style #: 112CAM-1012CB  
Colors Available: Navy, Tank Green, and White

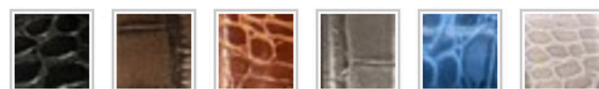


IEC EMBOSSSED CALF

\$215



2" Italian Embossed Crocodile with Covered Buckle  
Style #: 2IEC-894CB  
Colors Available: Black, Bone, Chocolate, Cognac,  
**In Store: Camel, Grey, Black**



SOUTH BEACH CALF

\$225



2" Pebbled Calf with Gold Grommets and Center Bar Buckle  
Style #: 2SB-1015G/G  
Colors Available: Antique Tan, Black, Chocolate, Navy, White,



LUSCIOUS CALF

\$285



2 3/8" Contoured Luscious Calf with Covered Buckle  
Style #: CTR238LUS-3851CB  
Colors Available: Black, Bone, Chocolate, Navy, Nutmeg, Red, Royal  
**In Store: Chocolate embossed croc**  
**In Store: Navy Solid**

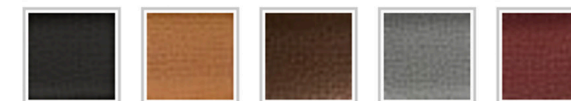


TOAST CALF

\$200



2" Pebbled Calf with Gold Buckle  
Style #: 2TOA-16552G  
Colors Available: Black, Gold, Grey, Lion, Red, and Tobacco



LUSCIOUS CALF

\$300



2" Two Toned Calf with Covered Buckle  
Style #: 2LUS/LUS-4350CB  
Colors Available: Black/White, Black/Cognac, Navy/Tan, and More

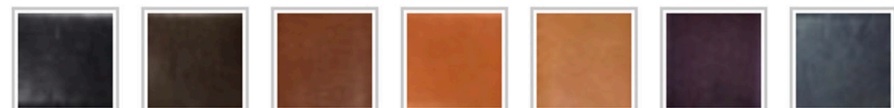


MONTE CARLO CALF

\$275



3 1/2" Glazed Calf with Large Tab and Nickel Buckle  
 Style #: 312>112MC-4656N  
 Colors Available: Black, Chocolate, Cognac, Papaya, and Oil  
**In Store: Chocolate, Monte Carlo Calf**



LUSCIOUS CALF

\$275



2 3/8" Luscious Calf with Gold O-Rings  
 Style #: 238LUS-ORINGSG

Colors Available: Black, Bone, Chocolate, Navy, Nutmeg, Red, Royal, Tangerine, Yellow,



*calf soft construction*

BUC CALF

\$225



2" High Pebbled Soft Construction Calf with Gold Buckle  
 Style #: 2BUC/BUC-894CB  
 Colors Available: Black, Chocolate, Cognac, Taupe, and Navy

\$215



2" High Pebbled Soft Construction Calf with Gold Buckle  
 Style #: 2BUC/BUC-4656G  
 Colors Available: Black, Chocolate, Cognac, Taupe, and Navy

\$225



2" High Pebbled Soft Construction Calf with Gold Buckle  
 Style #: 2BUC/BUC-4167CB  
 Colors Available: Black, Chocolate, Cognac, Taupe, and Navy

\$265



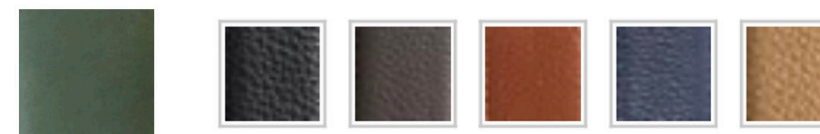
2 3/4" High Pebbled Soft Construction Calf with Brushed Gold Buckle  
 Style #: 2BUC/BUC-1210GB  
 Colors Available: Black, Chocolate, Cognac, Taupe, and Navy

\$275



3 1/8" High Pebbled Soft Construction Calf with Gold Buckle  
 Style #: 318BUC/BUC-4295G  
 Colors Available: Black, Chocolate, Cognac, Taupe, and Navy  
**In Store: Chocolate, Ivy Green**

SWATCHES



*jean belts casual, smooth, textured & distressed*

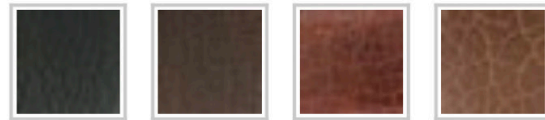
GARMENT BISON

\$200



1 1/2" Pebbled Bison with Antiqued Brass Buckle  
Style #: 112GARB-6520AB

Colors Available: Black, Chocolate, and Tobacco



EMBOSSED

\$185



1 3/8" Embossed Anaconda with Brass Buckle  
Style #: 138AA-5221AB

Colors Available: Cali Nut and Cognac



PEBBLED CALF

\$175



1 1/2" Pebbled Sueded Calf with brass basket weave buckle  
Style #: 112PSC-100798AB

Colors Available: Black, Chocolate, Sand



HAIR CALF

\$180



7/8" Haircalf with Antiqued Nickel Buckle  
Style #: 78HC-5171AS

Colors Available: Black, Burgundy, Camo, Chocolate, Cognac, Cow, Floral, Grey, Leopard, Royal, Tan, Tan Multi, and Zebra

\$285



1 3/8" Hair Calf with Wolf Plaque Buckle  
Style #: 138HC-6274AS

Colors Available: Black, Burgundy, Camo, Chocolate, Cognac, Cow, Floral, Grey, Leopard, Royal, Tan, Tan Multi, and Zebra

\$225



1 1/2" Hair Calf with Gold Buckle  
Style #: 112HC-4656G

Colors Available: Black, Burgundy, Camo, Chocolate, Cognac, Cow, Floral, Grey, Leopard, Royal, Tan, Tan Multi, and Zebra

**In Store: Cheetah and Tan Multi**

HAIR CALF

---

\$230



1 1/2" Hair Calf with Calf Covered Buckle  
Style #: 112HC-1012CB

Colors Available: Black, Burgundy, Camo, Chocolate, Cognac, Cow, Floral, Grey, Leopard, Royal, Tan, Tan Multi, and Zebra

\$295



1 1/2" Hair Calf with Bee Plaque Buckle  
Style #: 112HC-101029AB

Colors Available: Black, Burgundy, Camo, Chocolate, Cognac, Cow, Floral, Grey, Leopard, Royal, Tan, Tan Multi, and Zebra

\$275



1 1/2 Haircalf with Italian Buckle Set  
Style #: 112HC-6759KAS

Black, Burgundy, Camo, Chocolate, Cognac, Cow, Floral, Grey, Leopard, Royal, Tan, Tan Multi, Cheetah, Safari Zebra

\$275



2" Hair Calf with Antiqued Brass Buckle  
Style #: 2HC-4558AB

Colors Available: Black, Burgundy, Camo, Chocolate, Cognac, Cow, Floral, Grey, Leopard, Royal, Tan, Tan Multi, and Zebra

HAIR CALF CALFSKIN SWATCHES





STRETCH

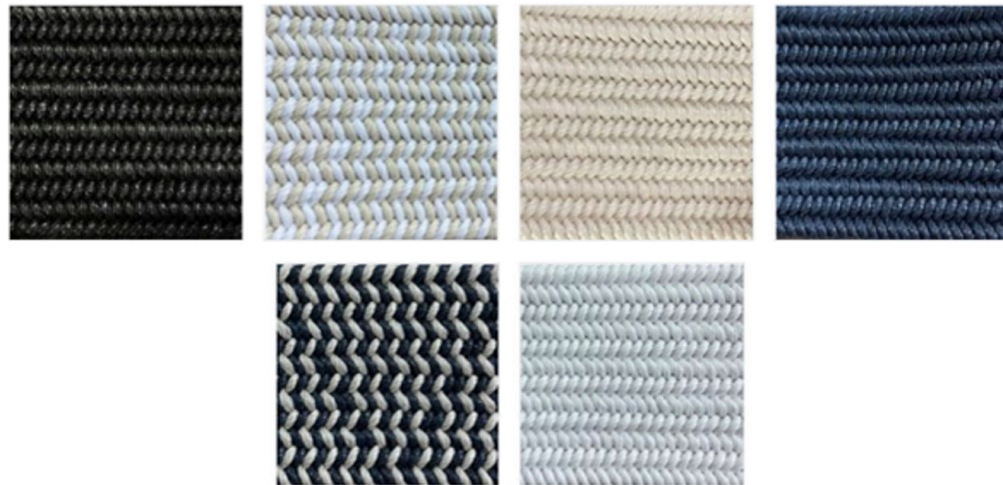
\$195



2" inch Italian Stretch belt with Round Matte buckle  
Style #:2ST-10902BL/GB

**In Store: Black**

Black, Bone/White, Natural, Navy, Taupe/Navy, White



*genuine exotics: anaconda, karung, lizard, python*

KARUNG FRESH WATER

\$275



1 1/2" Metallic Karung with Covered Buckle  
Style #: 112KAR-4735CB

Colors Available: Cocoa, Gold, Pewter, Silver, and Magenta



LIZARD

\$265



3/4" Lizard with Long Gold Buckle  
Style #: 34L-4674G

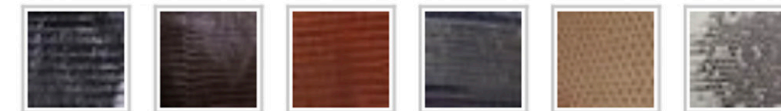
Colors Available: Black, Blush, Chocolate, Cognac, Red, and More

\$365



1 1/2" Lizard with Covered Buckle  
Style #: 112L-4167CB

Colors Available: Black, Blush, Chocolate, Cognac, Red, Natural Ringmarked, Royal Ringmarked,



OSTRICH LEG

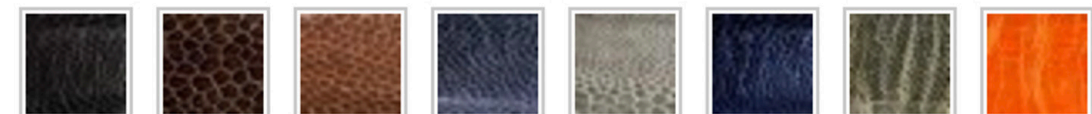
\$225



1" Ostrich Leg with Nickel Buckle  
Style #: 1OL-3831N

Colors Available: Black, Chocolate, Cognac, Gray, Navy, Pacific Blue, and More

**In Stock: Forest Ostrich**



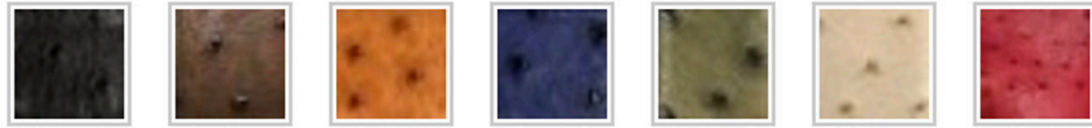
OSTRICH

\$350



1 1/8" Ostrich with Covered Buckle  
Style #: 118O-3849CB

Colors Available: Black, Brandy, Chocolate, Oryx, Royal Blue, Tapestry,



CROCODILE

\$400



1 1/2" Tingas Crocodile with Gold Buckle  
Style #: 112TC-4656G

Colors Available: Black, Bordeaux, Chocolate, Cognac, Grey



\$390



1 1/8" Matte Caimen Crocodile with Covered Buckle  
Style #: 118MCC-3849CB

Colors Available: Black, Brandy, Chocolate, Grey, Mink, Navy, Slate, Peanut Sundance,

\$575



2" Matte Caimen Crocodile with Covered Buckle  
Style #: 2MCC-4167CB

Colors Available: Black, Brandy, Chocolate, Grey, Mink, Navy, Slate, Peanut Sundance,



PYTHON

\$325



1 1/2" Python with Nickel Buckle  
Style #: 112PY-4656N

Colors Available: Black, Chocolate, Cognac, Natural, Matte Multi Grey, Matte Tiger Blue, Green Multi Glazed, Matte Citrus, Matte Purple Multi,

\$450



2" Python with Covered Buckle  
Style #: 2PY-4167CB

Colors Available: Black, Chocolate, Cognac, Natural, Matte Multi Grey, Matte Tiger Blue, Matte Citrus, Matte Purple Multi



*in stock belts available at the store*

# *special orders*

Other colors available at the trunk show

Please allow 8 weeks for special orders. If a customer has a special event or need sooner, we are happy to try and accommodate if we have the skin available.

All specials are made to order.

Covered buckles come only in the widths shown.  
**5/8", 1 -1/8", 1-1/2", 2", 2- 3/8"**



*\$225*

**1 1/2" Haircalf Belt** in Cheetah (silver and gold buckle)



*\$225*

**1 1/2" Haircalf Belt** in Tribal Tan (silver and gold buckle)



*\$280*

**Contoured 2 3/8" High  
Pebbled Calf Belt  
in Navy**



*\$195*

**2" Stretch Belt**  
in Black



*\$185*

**1 1/4" Reversible Belt**  
in Nutmeg & Black, \$185



*\$275*

**3 1/2" Oval Tab Belt**  
in Chocolate



*\$160*

**1 1/8" Metallic Belt**



*\$160*

**1 3/8" X Buckle**  
in Red Toast



*\$275*

**3 1/8" Wide Belt**  
in Chocolate & Ivy Green



*\$285*

**2 3/8" Wide Embossed Croc Belt**  
in Chocolate, \$285



*\$215*

**2" Embossed Croc Belt**  
in Camel, Black and Grey